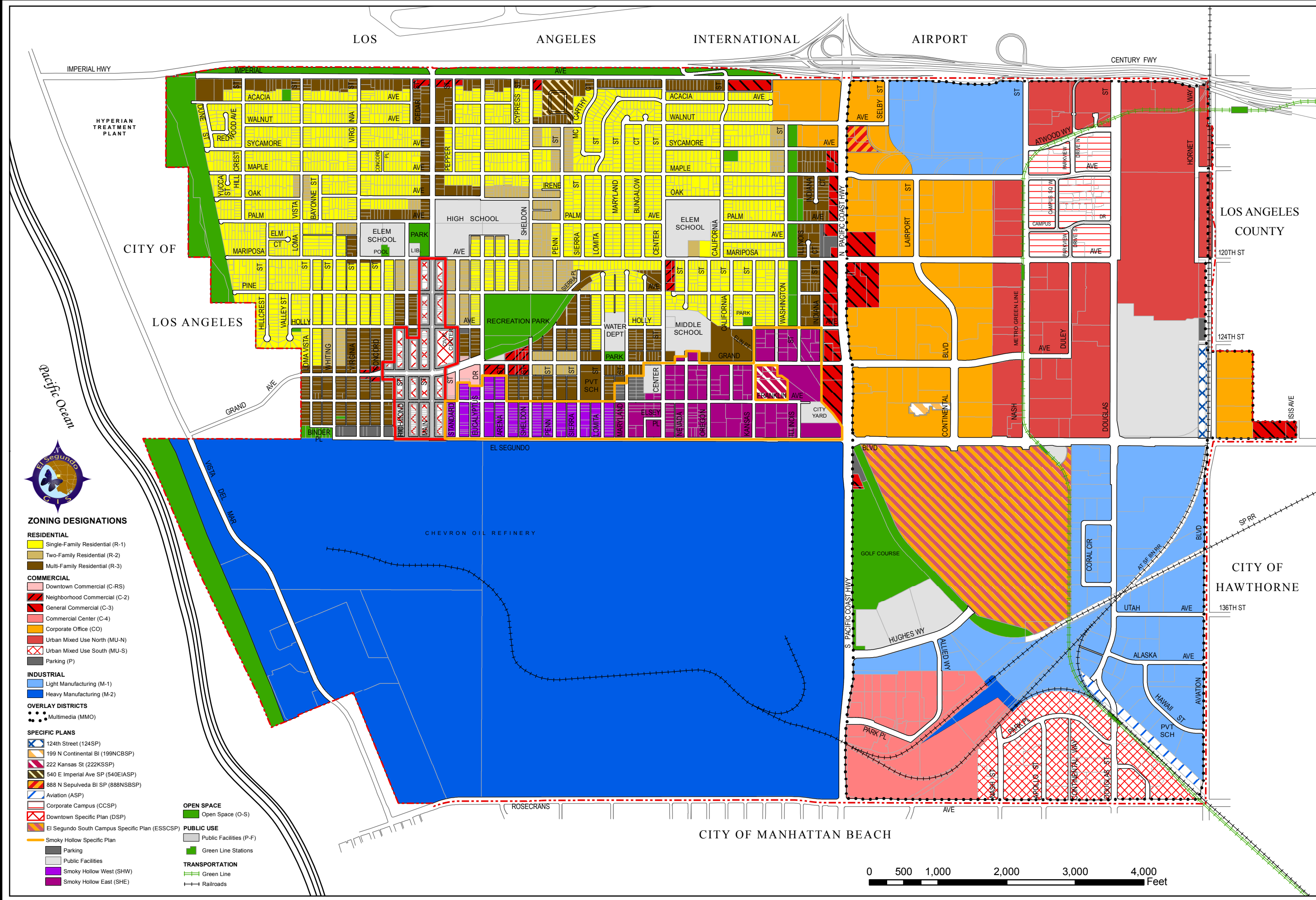


ZONING MAP

City of El Segundo



ZONING DESIGNATIONS

- RESIDENTIAL**
 - Single-Family Residential (R-1)
 - Two-Family Residential (R-2)
 - Multi-Family Residential (R-3)
- COMMERCIAL**
 - Downtown Commercial (C-RS)
 - Neighborhood Commercial (C-2)
 - General Commercial (C-3)
 - Commercial Center (C-4)
 - Corporate Office (CO)
 - Urban Mixed Use North (MU-N)
 - Urban Mixed Use South (MU-S)
 - Parking (P)
- INDUSTRIAL**
 - Light Manufacturing (M-1)
 - Heavy Manufacturing (M-2)
- OVERLAY DISTRICTS**
 - Multimedia (MMO)
- SPECIFIC PLANS**
 - 124th Street (124SP)
 - 199 N Continental Bl (199NCBSP)
 - 222 Kansas St (222KSSP)
 - 540 E Imperial Ave SP (540EIASP)
 - 888 N Sepulveda Bl SP (888NSBSP)
 - Aviation (ASP)
 - Corporate Campus (CCSP)
 - Downtown Specific Plan (DSP)
 - El Segundo South Campus Specific Plan (ESSCSP)
 - Smoky Hollow Specific Plan
- OPEN SPACE**
 - Open Space (O-S)
- PUBLIC USE**
 - Public Facilities (P-F)
 - Green Line Stations
- TRANSPORTATION**
 - Green Line
 - Railroads

| REVISIONS | DATE | ORDER |
|-----------|---------------|-------|
| 12/07/99 | Ord. 1314 | 1314 |
| 11/16/93 | Ord. 1212 | 1212 |
| 08/01/00 | Ord. 1319 | 1319 |
| 01/02/02 | Ord. 1345 | 1345 |
| 02/06/96 | Ord. 1245 | 1245 |
| 09/02/03 | Ord. 1365 | 1365 |
| 06/16/97 | Ord. 1272 | 1272 |
| 09/11/03 | LAFCO 03-138D | 1387 |
| 10/10/97 | Ord. 1279 | 1279 |
| 10/10/97 | Ord. 1292 | 1292 |
| 02/15/99 | Ord. 1387 | 1387 |
| 08/17/99 | Ord. 1308 | 1308 |
| 12/07/99 | Ord. 1314 | 1314 |
| 08/01/00 | Ord. 1319 | 1319 |
| 01/02/02 | Ord. 1345 | 1345 |
| 09/02/03 | Ord. 1365 | 1365 |
| 09/11/03 | LAFCO 03-138D | 1387 |
| 04/15/05 | Ord. 1382 | 1382 |
| 12/15/05 | Ord. 1387 | 1387 |
| 09/05/08 | Ord. 1419 | 1419 |
| 10/16/09 | Ord. 1432 | 1432 |
| 03/19/10 | Ord. 1440 | 1440 |
| 05/22/10 | Ord. 1441 | 1441 |
| 05/04/12 | Ord. 1469 | 1469 |
| 10/04/12 | Ord. 1470 | 1470 |
| 05/14/14 | Ord. 1494 | 1494 |
| 02/22/16 | Ord. 1516 | 1516 |
| 10/02/18 | Ord. 1573 | 1573 |

