

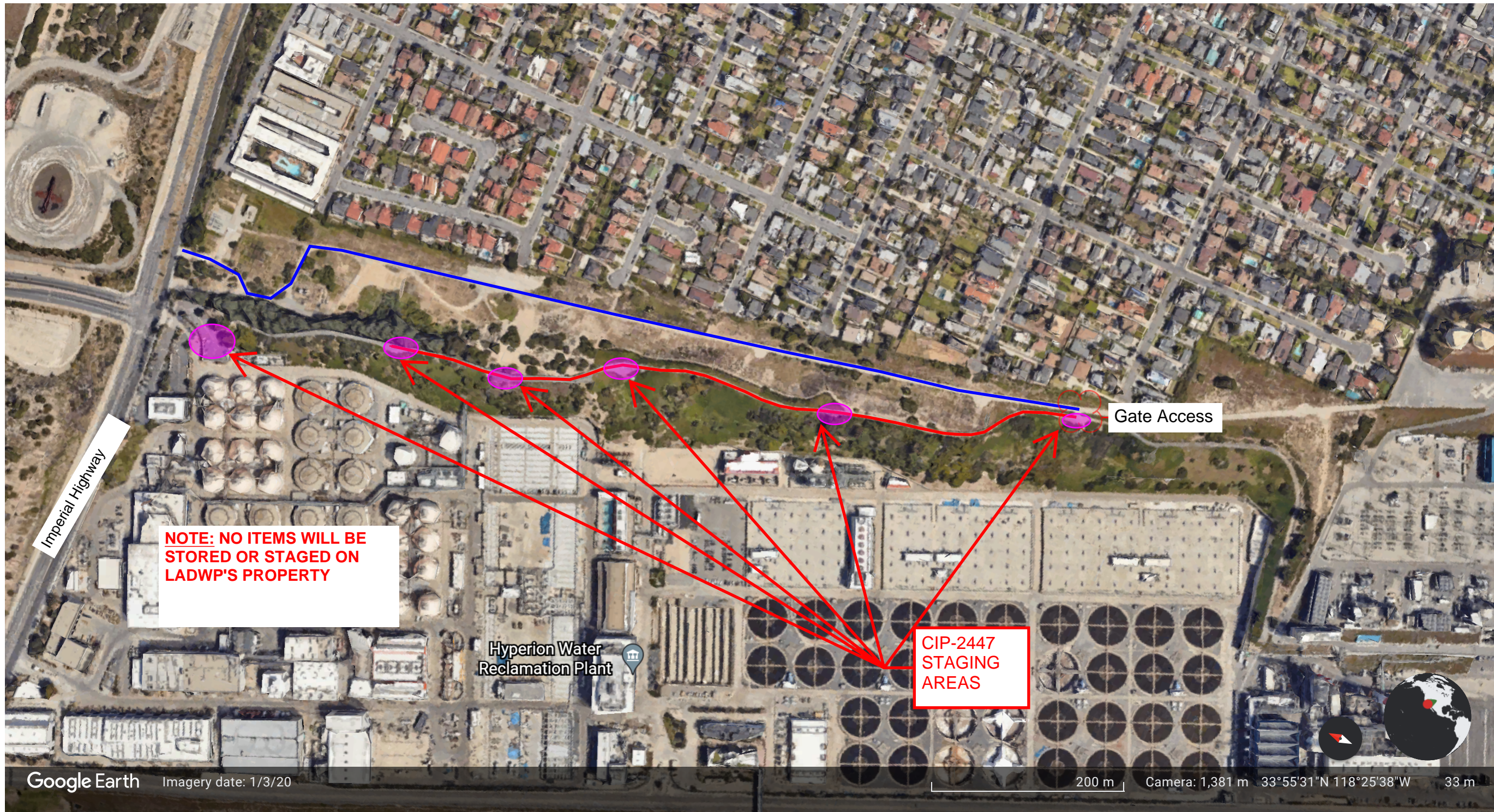


Start of asphalt removal and construct grade beam

Install 15-ft Sheet Piles on East side of road using smaller equipment 1-week

Continue to Deliver and Install Sheet Piles ABI equipment completed by 10/25/2022. Transition to smaller Kobelco equipment on 10/26/2022. Anticipated to complete installation of sheet piles by end of November 2022. Then remove asphalt, construct grade beam and curb, install new base and asphalt, fence and landscaping. Project to be completed by Summer 2023





Map of Hyperion Water Reclamation Plant: — CIP 2447 HWRP PERIMETER ROAD IMPROVEMENT PROJECT

— LADWP Transmission Line Right of Way No. 22  
Reference LADWP File No. P-101-774