

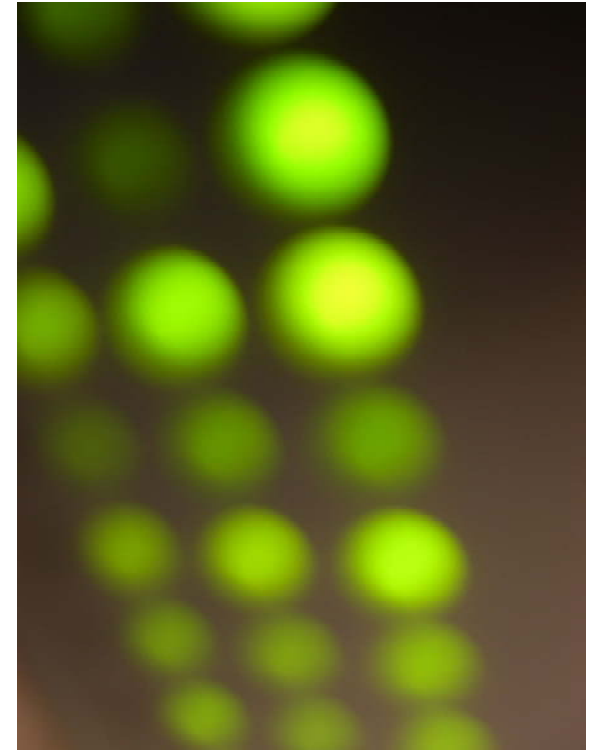


May 16, 2023

Osa Wolff  
Shute, Mihaly & Weinberger LLP

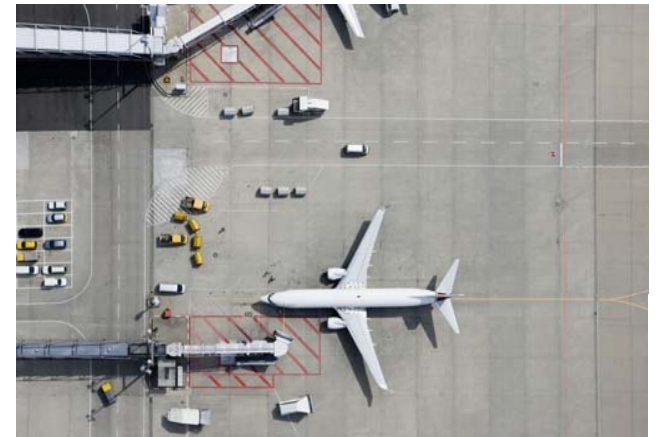
# FORMAT

- 10 minute presentation
  1. General LAX issues update
  2. Specific proposed action: RSI demonstration house sale
- Council questions
- Public comment
- Council deliberation/action
  1. Any general direction
  2. Proposed Resolution: RSI demonstration house sale



# EL SEGUNDO IS CONSISTENTLY ENGAGED ON LAX ISSUES

- 2005 Master Plan CEQA litigation & settlement (completed 2020)
- Landside Access Modernization Program (LAMP)
  - CEQA comments & 2017 MOU (expires 2030)
- Airfield & Terminal Modernization Project (ATMP) & Midfield Satellite Concourse (MSC):
  - CEQA comments & 2021 MOU (expires 2030)
- CALTRANS Noise Variances:
  - Past variances: 2005, 2011, 2020
  - Upcoming proceeding: starting 2023

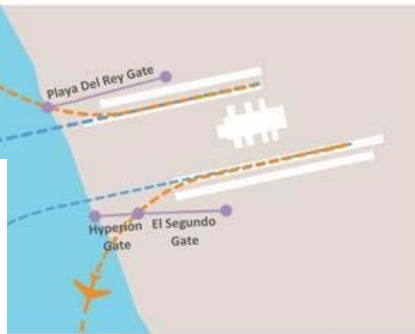
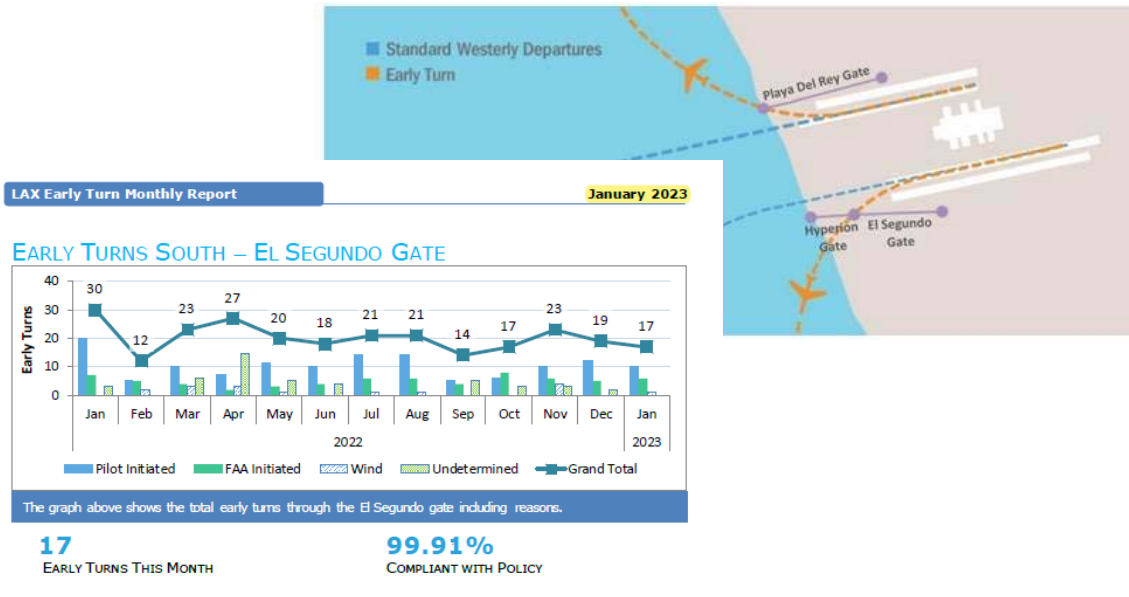


# 2021 ATMP/MSC MOU: OVERVIEW

| Topic   | LAWA obligations   |
|---|--|
| Cooperation, Information Sharing & Communication  | LAWA, FAA & El Segundo meet regularly on issues of mutual interest   |
| Residential Sound Insulation (RSI)                | LAWA takes over RSI from El Segundo, including enhancements (e.g., block rounding & owner upgrades). Cooperation on demo house sale.                             |
| Imperial Highway                                  | Green Infrastructure Project, including safety improvements<br>North Side Aesthetic Improvements<br>Conditions on use as haul route & road condition maintenance |
| Avoiding spillover parking from LAX in El Segundo | Lease renewals for LAX uses along Imperial west of Sepulveda must provide sufficient parking for employees, contractors & visitors                               |
| Aircraft gates limits                             | Annual gate counts to confirm continued compliance   |
| Ground Support Equipment (GSE)                    | GSE operators must meet emissions policy   |
| Cargo   | LAX Cargo study includes El Segundo as a stakeholder. Analyzing shift of cargo facilities along Imperial from west to east of Sepulveda                          |

# COOPERATION, INFORMATION SHARING & COMMUNICATION

El Segundo elected officials, staff & consultants regularly work with LAWA & FAA to advance El Segundo's interests.



# RESIDENTIAL SOUND INSULATION (RSI)

- 2018: El Segundo terminated its RSI program
- 2022: LAWA took over RSI, including enhancements (e.g., block rounding & owner upgrades).
  - Program up and running
  - Details on LAWA website
- LAWA, El Segundo & FAA currently cooperating on RSI demo house sale
- Proposed resolution tonight:
  - Declaring RSI demo house surplus (60-day SLA process)
  - Authorizing sale (open market with realtor)



# IMPERIAL HIGHWAY, THE GREEN INFRASTRUCTURE PROJECT, INCLUDING SAFETY IMPROVEMENTS

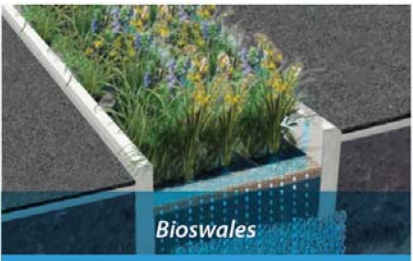
- Limits: From California Street to Vista Del Mar
- Project has been approved and highly recommended by various committees
- Approval by L.A. County is expected by end of the year
- Subsequently, the project will be designed and constructed
- Components/Scope:
  - Bioswales & dry wells
  - Bike Lanes/Connectivity and access to Dockweiler State Beach and Marvin Braude Bike Trail
  - Landscaping, hedges, and trees
  - Wayfinding signage to direct pedestrians to safe crossing locations, discourage pedestrians from jaywalking
- Funding & Cost
  - Estimated Cost - \$12M
  - LAWA Contribution - \$4M
  - City of El Segundo Contribution - \$0.5M from Measure W



Safe Clean  
Water Program

Imperial Highway Green  
Infrastructure Project

# IMPERIAL HIGHWAY, THE GREEN INFRASTRUCTURE PROJECT, INCLUDING SAFETY IMPROVEMENTS



New parkway bioswales in the median with native planting materials, grasses, flowers, trees and shrubs provide vegetated areas through which stormwater will be filtered, resulting in the removal of pollutants and groundwater replenishment.



Natural materials will be utilized in the bioswales to filter and infiltrate stormwater. Bioswales will be planted with region-specific native grasses, flowers, and shrubs.



Adding protected bike lanes will increase safety for cyclists, pedestrians and motorists. Extending the bike lane to the beach enhances regional mobility and recreational opportunities.



Utilizing hedges in the landscaping within the medians will create a visual and physical impediment to discourage pedestrians from jaywalking. New No Crossing and wayfinding signage will direct pedestrians to safe crossing locations.



Drywells are an infiltration best management practice (BMP) designed to capture, treat and infiltrate stormwater runoff. They can also provide flood mitigation.



## IMPERIAL HIGHWAY, NORTH SIDE AESTHETIC IMPROVEMENTS (CALIFORNIA TO PERSHING)

- LAWA to improve the aesthetics of the frontage property on the North side of Imperial Highway, including landscaping, sidewalks and parking for a budget of \$20M.
- LAWA to consult with El Segundo to promote consistency with the South Side Imperial Highway.
- This project has been approved earlier this year by LAWA Board as part of LAX CIP.
- Next step for LAWA is to have this project designed/constructed

## CONDITIONS ON USE AS HAUL ROUTE & ROAD CONDITION MAINTENANCE

- LAWA will communicate with El Segundo as a stakeholder when LAWA selects final construction staging site, contractor parking locations and haul routes
- El Segundo will be invited to attend LAWA Coordination and Logistics Management “CALM” Team meetings
- If Imperial Highway is used as a haul route, LAWA will direct its Airfield and Terminal Modernization Project (ATMP) contractors to provide a bond to fund the repair of potential damage to Imperial Hwy caused by its use as a haul route

# WHAT'S NEXT?

- Continued monitoring, engagement & advocacy
  - Imperial Highway projects
  - Data monitoring/annual gate counts
  - RSI program monitoring, technical assistance & demo house sale
  - Caltrans noise variance process (2023)
- Next up: Cargo



## QUESTIONS?



Osa Wolff

[wolff@smwlaw.com](mailto:wolff@smwlaw.com)

415-552-7272

