

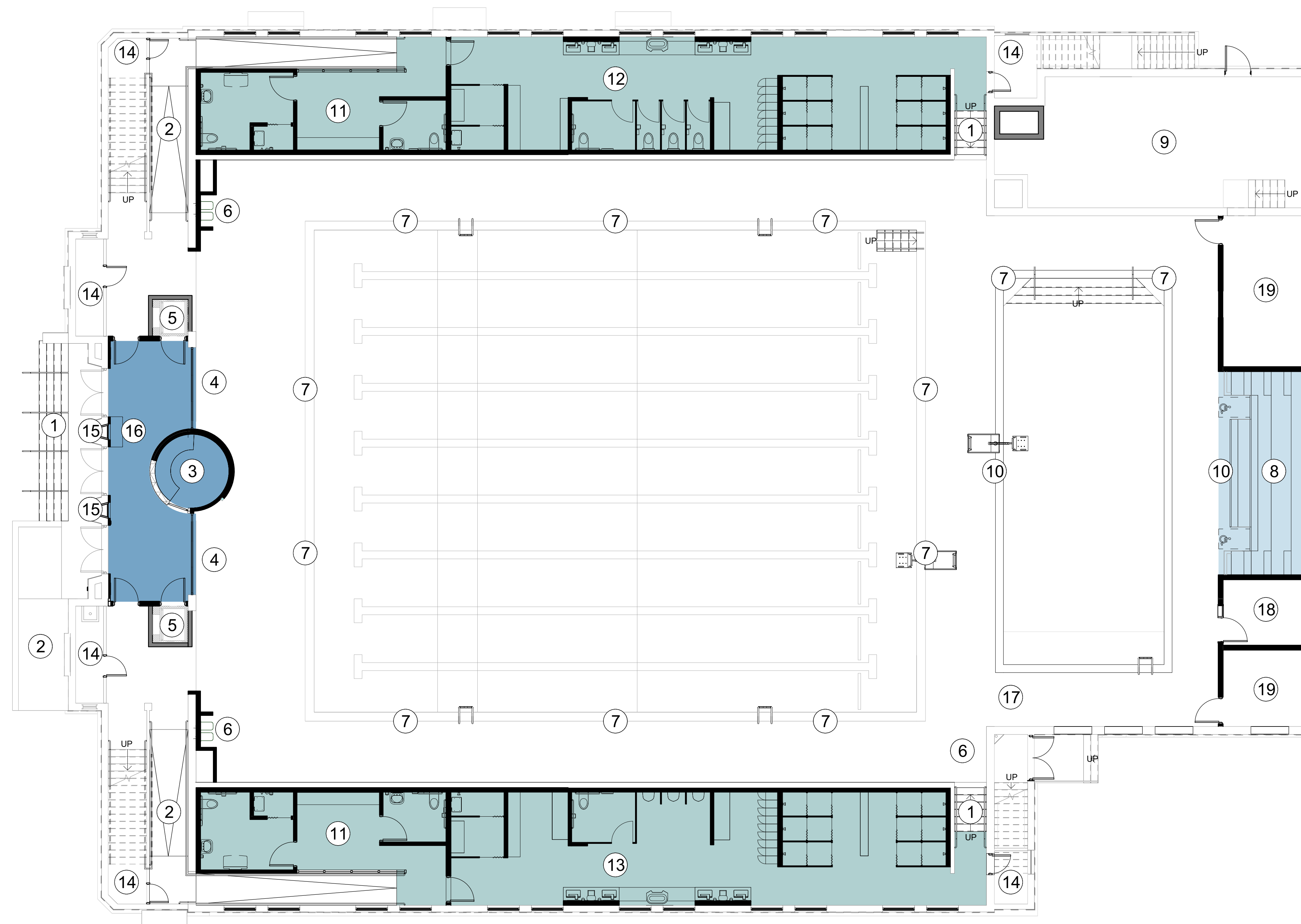
MAIN FLOOR PLAN

LEGEND

- LOBBY
- AUDIENCE VIEWING AREA
- LOCKERS

KEYNOTES

- ① CONCRETE STAIRS
- ② ACCESSIBLE RAMP
- ③ RECEPTION DESK
- ④ FOLDING GLASS WALL
- ⑤ WHEELCHAIR LIFT
- ⑥ WATERFOUNTAIN
- ⑦ POOL INLET
- ⑧ BLEACHER
- ⑨ POOL EQUIPMENT ROOM
- ⑩ (E) COLUMN TO BE WRAPPED
- ⑪ FAMILY AND GENDER NEUTRAL RESTROOMS
- ⑫ WOMEN'S LOCKER ROOM
- ⑬ MEN'S LOCKER ROOM
- ⑭ STORAGE CLOSET
- ⑮ DISPLAY CASE
- ⑯ BENCH
- ⑰ FRAMED OPENING FOR EXITING
- ⑱ OFFICE
- ⑲ POOL STORAGE ROOM



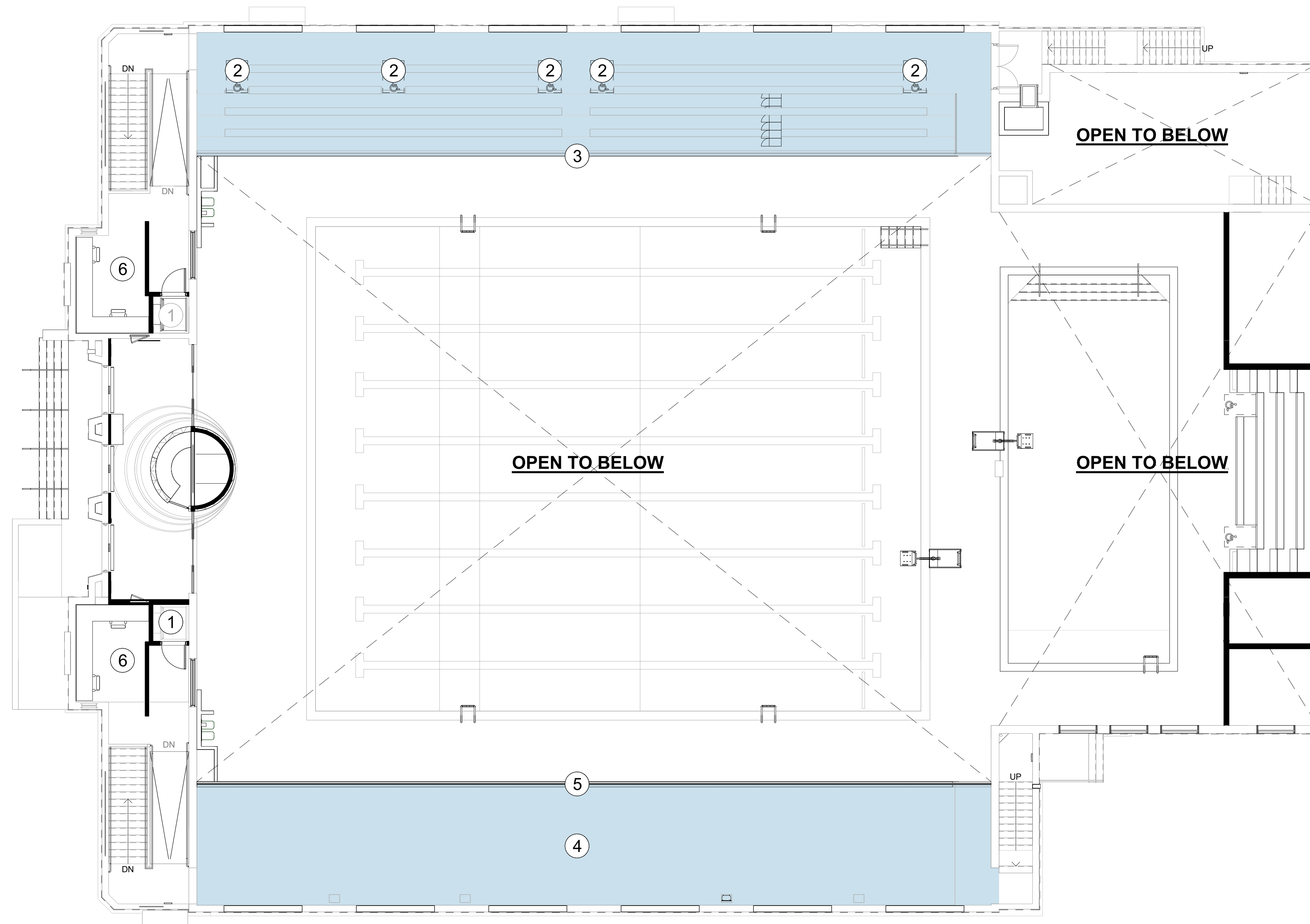
SECOND FLOOR PLAN

LEGEND

- LOBBY
- AUDIENCE VIEWING AREA
- LOCKERS

KEYNOTES

- ① WHEELCHAIR LIFT
- ② ACCESSIBLE BLEACHER SEATING
- ③ REVISED GUARD RAIL
- ④ FLAT VIEWING TERRACE
- ⑤ GLASS GUARD RAIL
- ⑥ OFFICE



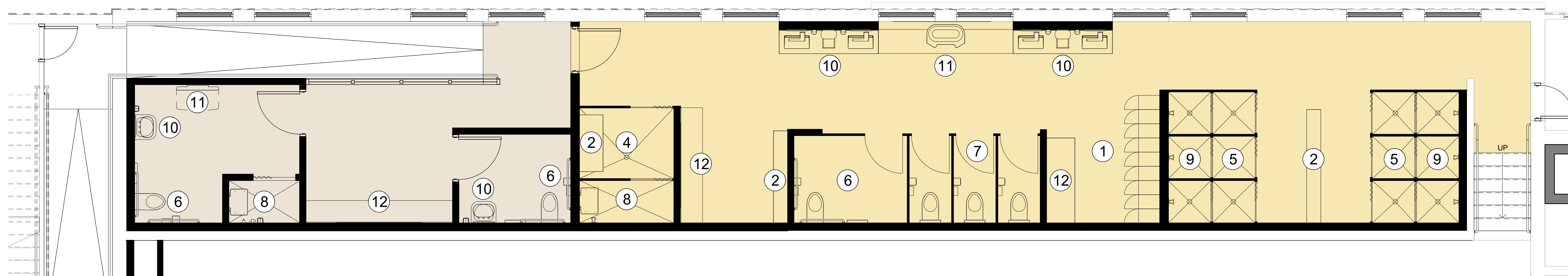
ENLARGED LOCKER ROOM PLANS

LEGEND

- FAMILY AND GENDER NEUTRAL AREA
- WOMEN'S LOCKER ROOM
- MEN'S LOCKER ROOM

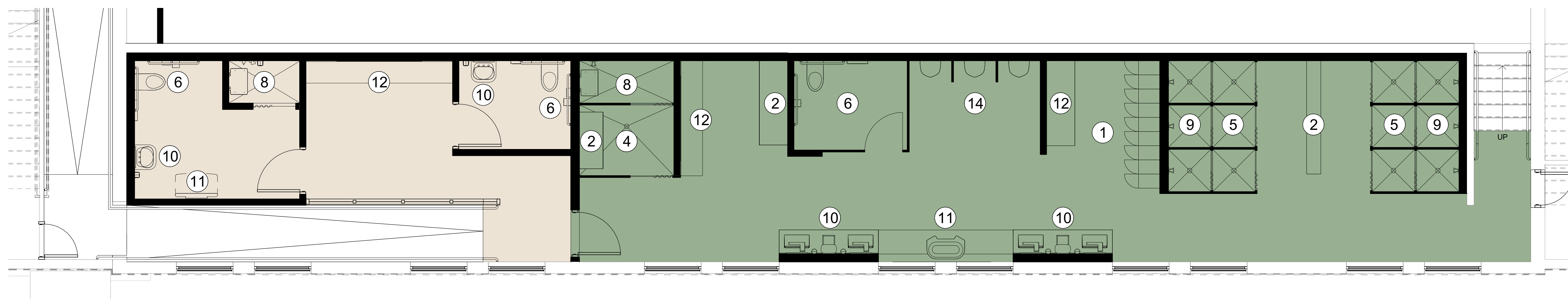
KEYNOTES

- ① LOCKERS
- ② BENCH
- ③ ACCESSIBLE BENCH
- ④ ACCESSIBLE CHANGING ROOM
- ⑤ CHANGING ROOM
- ⑥ ACCESSIBLE TOILET
- ⑦ TOILETS
- ⑧ ACCESSIBLE SHOWER
- ⑨ SHOWER
- ⑩ ACCESSIBLE LAVATORY
- ⑪ CHANGING TABLE
- ⑫ COUNTER WITH MIRROR
- ⑬ ACCESSIBLE URINAL
- ⑭ URINALS



2 WOMEN'S LOCKER ROOM

SD-A1105 Scale: 1/4" = 1'-0"



1 MEN'S LOCKER ROOM

SD-A1105 Scale: 1/4" = 1'-0"

WOMEN'S

	(E)	REQUIRED	PROVIDED
TOILETS	3*	4	6
LAVATORIES	4*	3	4
SHOWERS	14*	4	10
CHANGING	20*	-	10
LOCKERS	12	-	17

*THERE ARE NO ACCESSIBLE (E) FIXTURES
FIXTURE REQUIREMENTS FROM CBC 3116B.2

MEN'S

	(E)	REQUIRED	PROVIDED
TOILETS	2*	3	3
URINAL	3*	3	3
LAVATORIES	1*	3	4
SHOWERS	12*	4	10
CHANGING	-	-	10
LOCKERS	12	-	17

*THERE ARE NO ACCESSIBLE (E) FIXTURES
FIXTURE REQUIREMENTS FROM CBC 3116B.2

